

# BUILD YOUR OWN FORESTER.

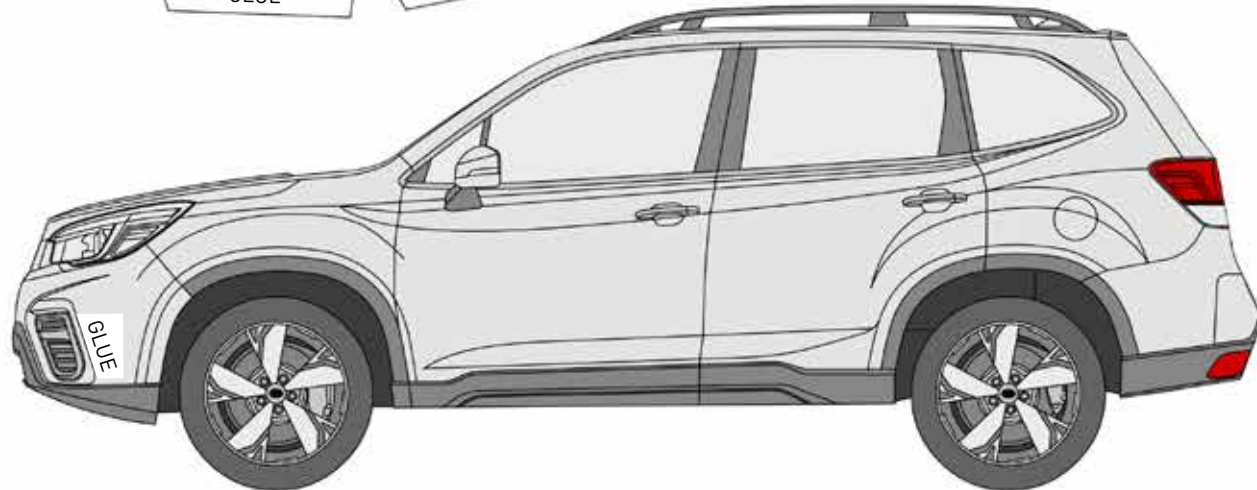
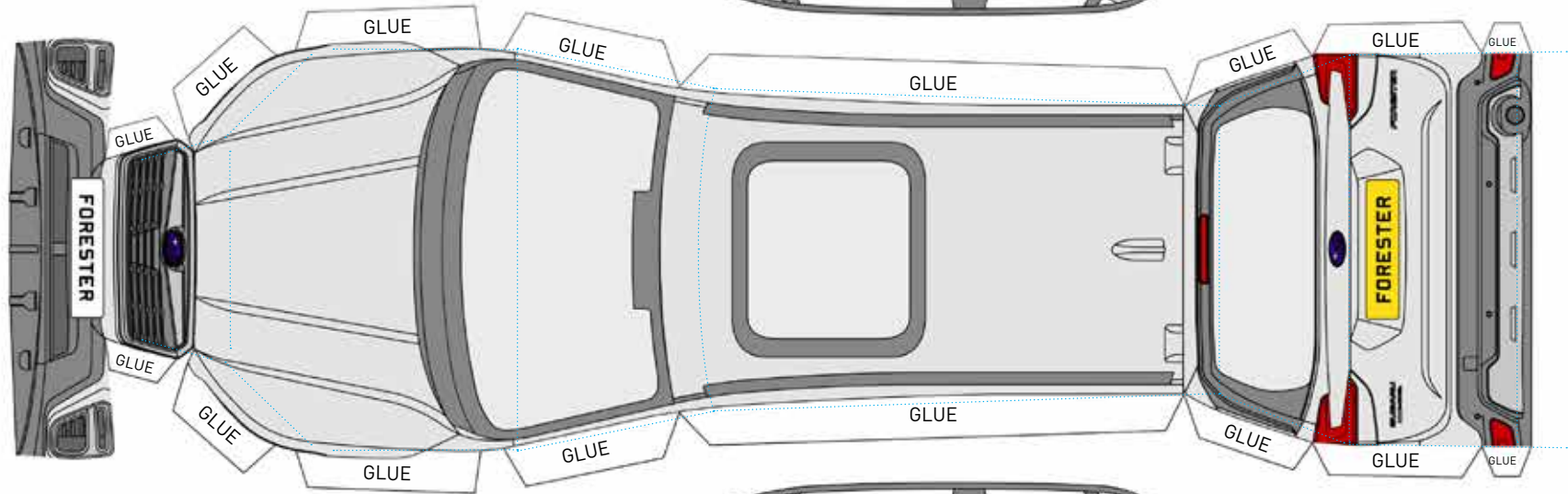
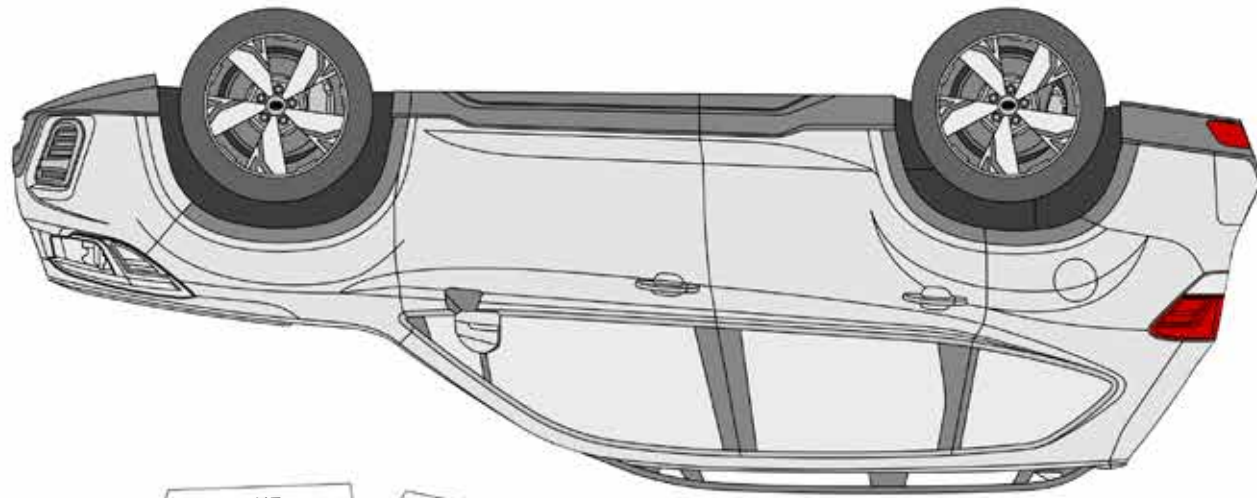
With a little care and patience you can make a brilliant 3D model of the Subaru Forester e-BOXER.

Simply follow these instructions:


1. Print out your template and colour in your Forester. The more colourful and creative the design the better!
2. Carefully cut around the edges of all 3 parts.
3. Fold along the dotted lines.
4. Apply glue to tabs and panels where marked.
5. Wrap the front bumper over the front side panels and glue where marked.


Top Tip: Start joining the sides to the top by lining up the corners at the top of the tailgate - then everything should line up.


Please note that the roof rails are designed to protrude above the roof edges.



Share your creations with us on our social channels using **#SubaruCraftDay**

 @OfficialSubaruUK

 @SubaruUK

 @SubaruUK